

## MAXPRO® VMS

www.honeywellvideo.com

### VIDEO MANAGEMENT SYSTEM

Honeywell's MAXPRO VMS (video management system) controls multiple sources of video subsystems to collect, manage and present video in a clear and concise manner. MAXPRO VMS intelligently determines the capabilities of each subsystem across various sites, allowing video management of any analog or digital video device through a unified configuration and viewer. The subsystems can be analog matrix switches or digital/network video recorders allowing any analog or digital input to be viewed on any analog or digital monitor. Users can benefit from using traditional analog systems and IP-network systems at the same time to ensure maximum use of their initial investments. These subsystems range from Honeywell matrix switchers, DVR/NVRs and 3rd party systems.

Control of MAXPRO VMS can be through a traditional joystick controller, mouse or even through third party interface. The extremely powerful rules engine (Macro's) allows customization of the system to respond and control in the best possible manner for the application. MAXPRO VMS is highly scalable so users can easily expand their video surveillance network from small to medium single instances to enterprise level supporting thousands of devices. Additionally, MAXPRO VMS includes integration with Honeywell's Pro-Watch® security management system, Active Alert® and People Counter video analytics, as well as other Honeywell products and solutions. The feature-rich user interface truly offers a unified management platform across many disparate systems to further embody Honeywell's concept of "Learn One, Know Them All."

#### Market Opportunities

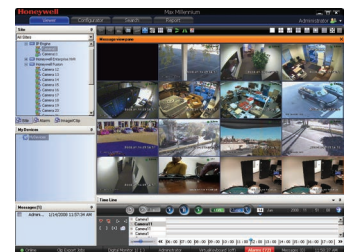
MAXPRO VMS is ideal for facilities requiring at-risk critical infrastructure protection such as airports, seaports, large multi-site commercial buildings, casinos, and other high-profile facilities. It is the perfect client-server video management solution for locations requiring the use of both digital and analog technologies.

#### Features

- Feature-rich and user-friendly Client interface to view video from numerous different recorders from a single point
- Role-based operator privileges
- Web client option for simple, no license, no software install applications
- Redundant server option increases system reliability
- Operators can log on using their local language and the built-in messaging system allows operators to share video scenes via instant messages.
- Auto-discovery of cameras connected to supported recorders
- A Single MAXPRO Server can support numerous recording sub systems (NVR/DVR's)
- Remote monitor feature allows controlling all monitors from a single client (Monitor Wall control)
- An extremely powerful macro programming language is available to fully customize actions based on events
- Surrounding cameras mode with presets, makes following subjects of interest simple and efficient by allowing the nearest camera of interest to be immediately in view
- Incident management mode allows creating a single clip with multiple cameras at different times that can be played back sequentially or simultaneously through a salvo layout
- Remote monitor mode allows sharing and controlling a remote monitor while still viewing locally
- Control any analog or digital monitor from a single workstation or joystick keyboard. Allows the system to be used as a true analog and digital matrix.
- Ability to investigate events and alarms by simultaneously viewing alarm video at various stages. For every alarm, users can view the video captured during pre-alarm, on-alarm, post-alarm, and also view live video from the camera which triggered the alarm through a single 2x2 salvo.
- Enriched video viewing experience through intuitive video rendering engine optimizes CPU utilization by altering the video frame rate
- Search and find video through event view or timeline. Preview search allows viewing a snapshot at various times to quickly narrow the scene of interest.
- Commentable bookmarks allow users to tag scenes of interest so as to easily return to the scene
- Distributed architecture in the form of multiple MAXPRO servers in a Parent Child topology facilitates "Enterprise" style deployment.



MAXPRO VMS Client Viewer 2x2



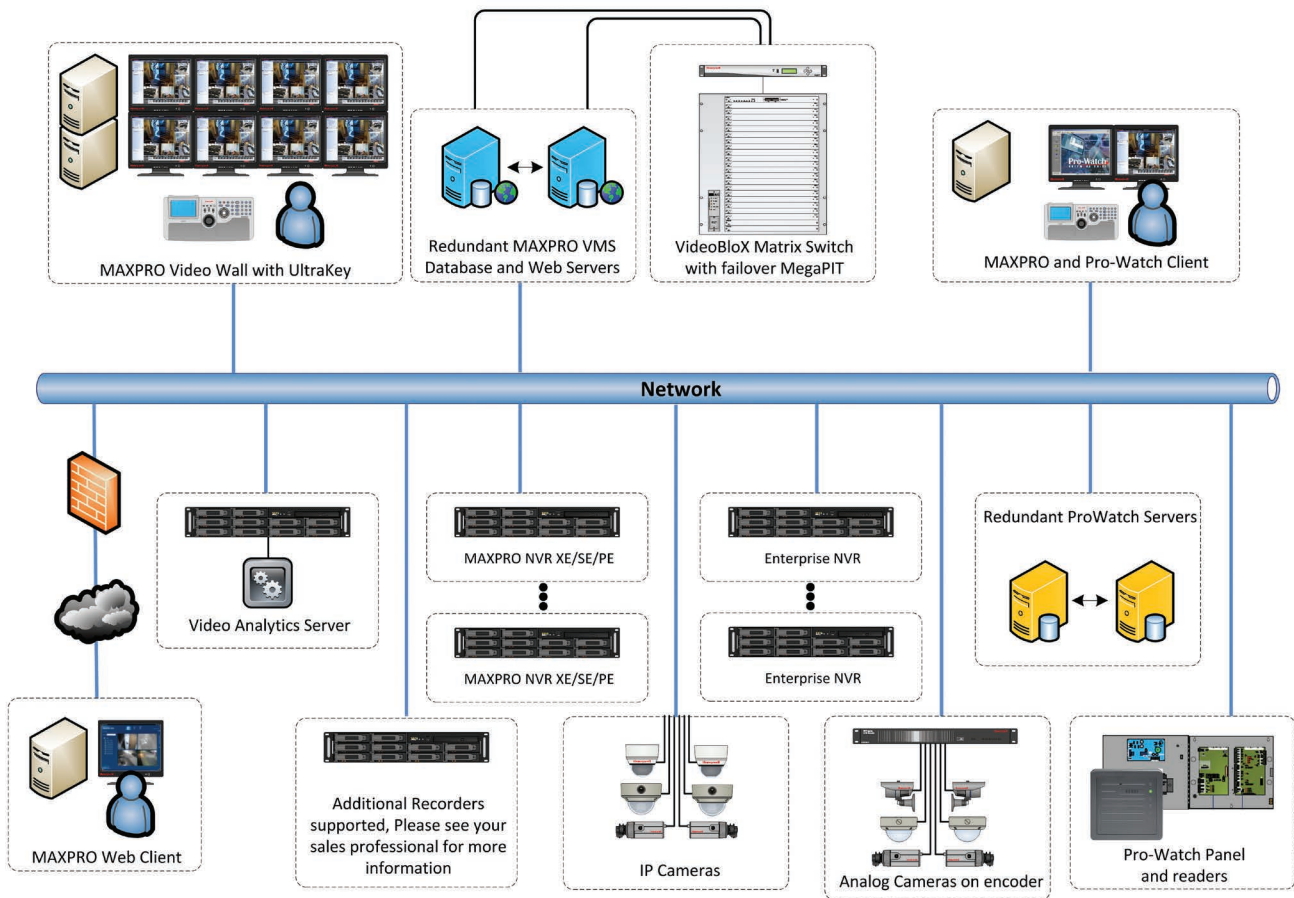
MAXPRO VMS Client Viewer 4x4

## ARCHITECTURE

MAXPRO VMS is based on client-server architecture for maximum flexibility, customization and integration. It offers one-click migration support from analog matrix systems. The MAXPRO VMS client enables the monitoring of sites and the configuration of video devices such as cameras, monitors, keyboards, etc. The MAXPRO VMS server consists of the MAXPRO VMS framework controller and database, and other core components.

The following diagram illustrates the MAXPRO VMS architecture and associated components:

### MAXPRO VMS Typical System Design - R310



## RECOMMENDED HARDWARE SPECIFICATIONS

MVMS R310 Minimum Server Specs	Standard Spec up to 5 Clients	Performance Spec 10 clients	Performance Spec 25 Clients and greater
Processor	Single Intel® Quad Core Xeon E3 1224V3 3.2GHz	Single Intel® 6 Core Xeon E5 2630V2 2.6GHz	Dual Intel® 6 Core Xeon's E5 2630V2 2.6GHz
Operating System	Microsoft Windows® Server 2008 R2 or 2012 32 and 64 bit		
Computer Type	Server – dual power supply suggested		
System Memory (RAM)	8GB	16GB	16GB
DVD Drive	DVD +/- RW		
Disk	Two separate hard drives or two sets of RAID arrays		
	Disk/RAID set 1 utilizes 10K RPM SATA 150 GB or 10K-15K RPM SCSI 146 GB for Windows operating system, MAXPRO VMS Server Software, and Microsoft SQL Server software		
	Disk/RAID set 2 utilizes 10K RPM SATA 150 GB or 10K-15K RPM SCSI 146 GB for MAXPRO VMS database files and Microsoft SQL Server database files		
	Note: If fault tolerance is required, RAID set 1 is RAID 1, 10 or 0+1 and RAID set 2 is RAID 10 or 0+1		
Video Adpater	Display Adapter with Video resolution 1024x768 pixels; 32-bit color or higher		
Serial ports	Only required if serial device are to be connected - Suggested 8 Port MOXA PCI-e serial RS232		
Network Connection	1 Gbit/sec or greater		
Virtual Environment	VM Ware ESXi Ver 4, vSphere and Hyper-V		

MVMS R310 Minimum Workstation Specs	2 Monitor Workstation	4 Monitor Workstation
Processor	Intel Core i7-4770K, 3.5GHz	
Operating System	Microsoft Windows® 7 or 8.2 32 and 64 bit	
Computer Type	Workstation	
System Memory (RAM)	8 GB	
DVD Drive	DVD +/- RW	
Disk	250 GB 7200RPM SATA3	
Video Adpater	NVIDIA Quadro NVS300, 512 MB	NVIDIA Quadro NVS510, 2 GB
Network Connection	1 Gbit/sec or greater.	
Virtual Environment	Virtual environment not supported on Client machines	

For detailed recorder versions, hardware and software compatibility please check the following link  
<http://www.security.honeywell.com/hota/compatibility/index.html>

## ORDERING INFORMATION

MAXPRO VMS - Part Numbers and Licensing				
<b>MAXPRO VMS - Base Software and Licenses</b>				
HNMSWMS	VMS Base Software includes: MAXPRO VMS, SQL 2012 Express, includes Licenses for One (1) MAXPRO VIEW Client, with 64-channel interface to MAXPRO NVR Series, IP Engine, Enterprise NVR, MAXPRO-Net and VideoBloX Matrix Switch. (Add "-B" to P/N for redundant server licenses)			
SSAHNMBASE	Annual software support agreement - MAXPRO VMS Base software			
<b>MAXPRO Client License - one license per connected workstation (Client application can run multiple instances) (Add "-B" to P/N for redundant server licenses)</b>				
HNMSWCL	MAXPRO View - Single Client License			
SSAHNMW1	Annual software support agreement - Single (1) Client			
SSAHNMW5	Annual software support agreement - Five (5) Client			
SSAHNMW10	Annual software support agreement - Ten (10) Client			
<b>MAXPRO VMS Base Channel License (Add "-B" to P/N for redundant server licenses)</b>				
HNM64	Additional 64 Base Channels	HNM384	Additional 384 Base Channels	
HNM128	Additional 128 Base Channels	HNM448	Additional 448 Base Channels	
HNM192	Additional 192 Base Channels	HNM512	Additional 512 Base Channels	
HNM256	Additional 256 Base Channels			
<b>MAXPRO VMS with Active Alert® Video Analytics - one license per analytics channel</b>				
HNMHVAB	HVA - Base Package	HNMHVASI	HVA - Smart Impressions	
HNMHVAS	HVA - Standard Package	HNMHVAPC	HVA - People Counter	
HNMHVAP	HVA - Premium Package			
MAXPRO VMS Lite - Part Numbers and Licensing				
<b>MAXPRO VMS Lite - Base Software and Licenses</b>				
HNMSWMSLT	MAXPRO VMS Lite Software includes: MAXPRO VMS, SQL 2012 Express, includes Licenses for One (1) MAXPRO VIEW Client, with 64-channel interface to MAXPRO NVR Series, IP Engine, Enterprise NVR, MAXPRO-Net and VideoBloX Matrix Switch. Expandable up to a maximum of three Clients and 128 Channels. No third party adapter support. (Add "-B" to P/N for redundant server licenses)			
SSAHNMLT	Annual software support agreement - MAXPRO VMS Lite software			
<b>MAXPRO VMS Lite Base Channel License - one license per video input</b>				
HNM64	Additional 64 Base Channels			
<b>MAXPRO VMS Lite Upgrade</b>				
HNMUG	Upgrade MAXPRO VMS Lite to MAXPRO VMS			
MAXPRO VMS Version Recorder Compatibility				
Recorder Models	R310 B313 Current release	R300 SP2 B215 Prior release	R300 SP1 B203 Prior release	R300 B188 Prior release
Maxpro NVR	✓	✓	✓	✓
MAXPRO VMS (VMS in VMS)	✓	✓	✓	✓
Enterprise	✓	✓	✓	✓
IP Engine	✓	✓	✓	✓
RapidEye	●	✓	✓	✓
Fusion	●	✓	✓	✓
HRDP H.264	●	✓	✓	✓
HRDP MPEG4	●	✓	✓	✓
HRXD	✗	✓	✓	✓
HRSD	✗	✓	✓	✓
Pelco DX8100	✗	✓	✓	✗
Pelco Digital Sentry	●	✓	✓	✓
Milestone Xprotect Enterprise	●	✓	✓	✓
LG	●	✓	✓	✗
EXACQ	●	✗	✗	✗
Panasonic WJ-HD Series	●	●	●	✓
Geviscope	●	●	●	✓

✓ Supported   ✗ Not Supported   ● Support for this recorder will be available with an upcoming driver update

### Automation and Control Solutions

Honeywell Security Products Americas  
 2700 Blankenbaker Pkwy, Suite 150  
 Louisville, KY 40299  
 1.800.323.4576  
 www.honeywell.com

L/MAXVMSD/D  
 June 2015  
 © 2015 Honeywell International Inc.

